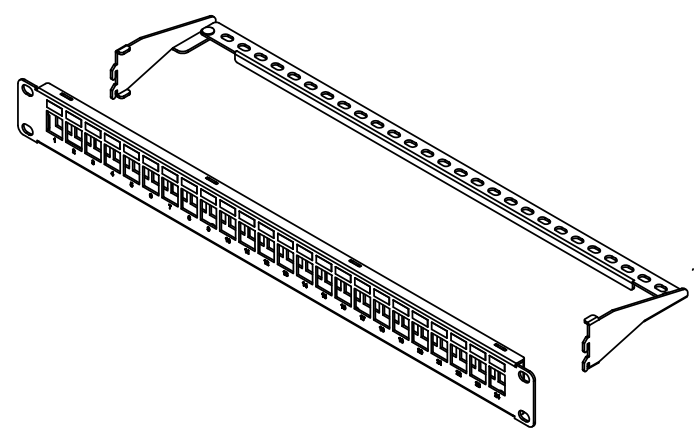
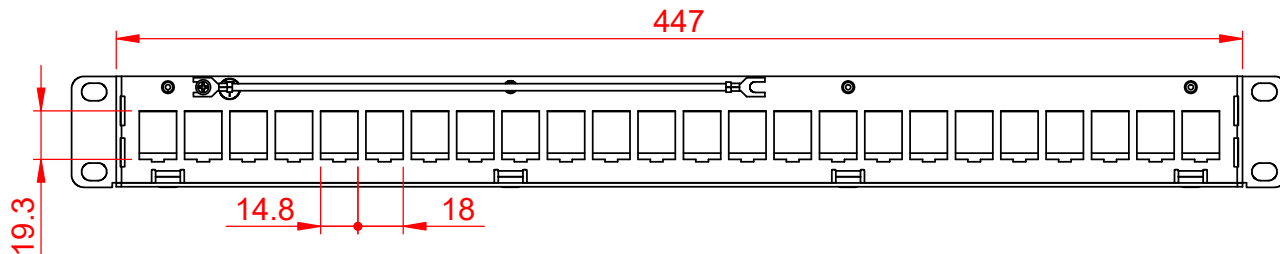


1 2 3 4 5 6

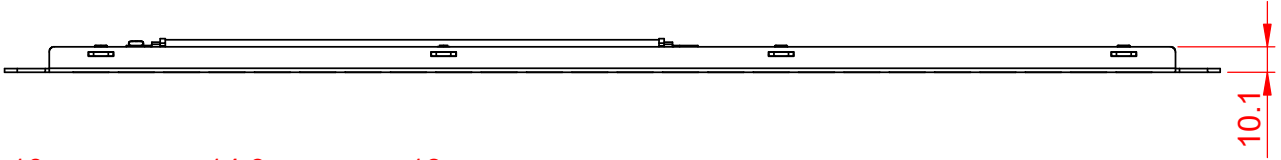
A

A



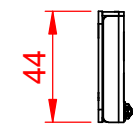
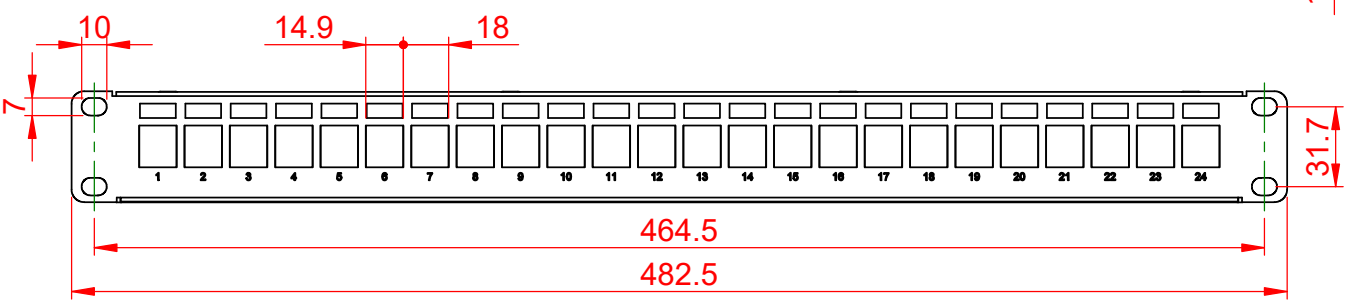
B

B



C

C



**MATERIAL**

PANEL-FRONT : SPCC BLACK POWDER PAINTING COAT FINISH.  
 PANEL-BACK : SECC WITH NICKEL UNDERCOAT.  
 WIRE MANAGEMENT : SPCC BLACK POWDER PAINTING COAT FINISH.

**PHYSICAL CHARACTERISTICS**

OPERATING TEMPERATURE RANGE : -10°C TO 60°C.  
 STORAGE TEMPERATURE RANGE : -40°C TO 68°C.  
 HUMIDITY : 10%~90%RH.

**ENCLOSURE**  
 WIRE MANAGEMENT X 1 PC



D

D

GENERAL TOLERANCE OF DIMENSIONS X.XXX ±0.005 X.XX ±0.05 X.X ±0.1	DRAWING	JUN. 02 2019	Magic	<b>KUWES</b>
	CHECK	JUN. 02 2019	Magic	
	APPROVAL	JUN. 02 2019	Magic	
	DATE		NAME	ITEM NO.: AKSKJF24-S7D-B-BK
SCALE	1/1 (A4)	UNIT	mm	DES.:CAT.7 STP PATCH PANEL - BLANK
DRAWING NO.		DRAWING CLASSIFICATION		
DRAWING CLASSIFICATION		S	SHEET	1 OF 1

1 2 3 4 5 6 10cm

1

2

3

4

5

6

A

A

B

B

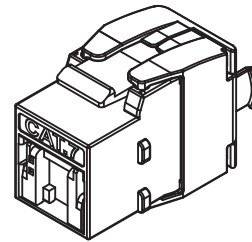
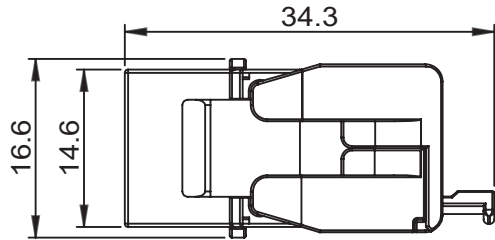
C

C

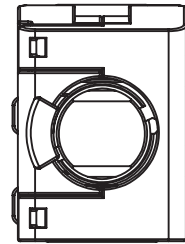
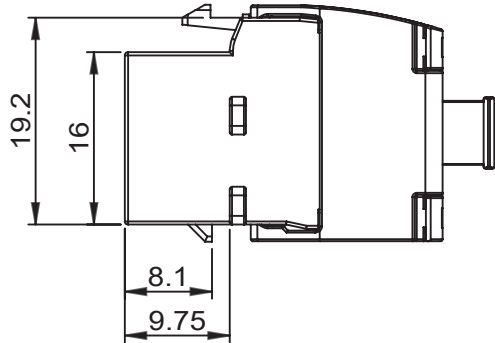
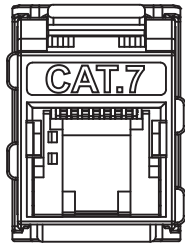
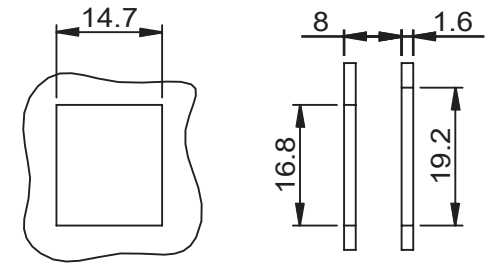
D

D

PRODUCTION



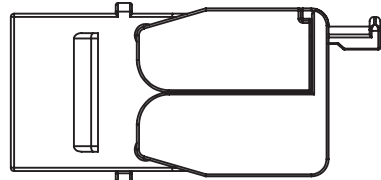
SUGGESTED MOUNTING CUTOUT



ACCORDING TO : ANSI/TIA-568-C.2  
ISO/IEC 11801 2nd Edition  
IEC 60603-7

MATERIAL

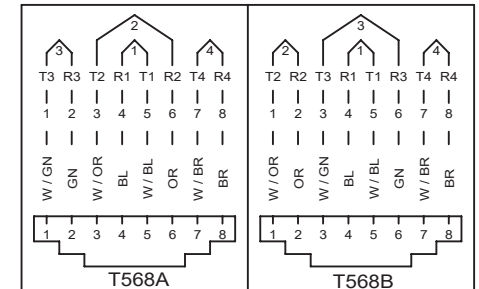
BRACKET : NICKEL SILVER ALLOY.  
KEYSTONE JACK HOUSING : ZINC ALLOY,NICKEL PLATED.  
REAR HOUSING : ZINC ALLOY,NICKEL PLATED.  
KEYSTONE JACK LATCH : PC+ABS,UL94V-0.  
CONTACT HOLDER : PC,UL94V-0.  
SHUTTER : PC,UL94V-0.  
SPRING : SUS304 .  
JACK CONTACTS : PHOSPHOR BRONZE,50U" GOLD PAINTING.  
IDC PLASTIC : PC,UL94V-0.  
IDC TERMINALS : PHOSPHOR BRONZE,TIN OVER NICKEL UNDERCOAT.



ENCLOSURE  
IDC CAP X 1 PC



COMMUNICATION  
CIRCUIT ACCESSORIES



PHYSICAL CHARACTERISTICS

INSERTION LIFE : 750 MATING CYCLES WITH FCC COMPLIANT 8P PLUG.  
CONTACT FORCE : 100 GRAMS WITH FCC COMPLIANT 8P PLUG.  
PLUG RETENTION FORCE : 11 LBF MIN.  
DURABILITY : 30 TERMINATION CYCLES.  
CONTACT COMPATIBILITY : ACCOMMODATES 22 TO 24 AWG SOLID.  
OPERATING TEMPERATURE RANGE : -10°C TO 60°C.  
STORAGE TEMPERATURE RANGE : -40°C TO 68°C.  
HUMIDITY : 10%-90%RH.

ELECTRICAL

INSULATION RESISTANCE : 500 MΩ.  
DIELECTRIC WITHSTANDING VOLTAGE : 1000 V AC.  
DC CURRENT RATING : 1.5 Amps.  
DC RESISTANCE : 0.1Ω.  
CONTACT RESISTANCE : 20mΩ.

NOTE

\* ONLY ACCEPT RJ-45 8P8C PLUG.

GENERAL  
TOLERANCE  
OF DIMENSIONS  
X.XXX ±0.005  
X.XX ±0.05  
X.X ±0.1

DRAWING	14.JUN.2016	QIQI	<b>KUWES</b>
CHECK	14.JUN.2016	JANE	
APPROVAL	14 JUN 2016	JAIMY	
DATE		NAME	ITEM NO.: KSNT-TLSS-ABL-S7-S3M
SCALE	1/1 (A4)	UNIT	mm
DRAWING NO.		DRAWING CLASSIFICATION	
S		SHEET	1 OF 1
A1			

1

2

0

3

4

10cm

5

6